

PORTABILITY



POSITIONING



SURGICAL SUITE



15 cm x 15 cm
Detector



Low Dose Mode
Pediatric Cleared

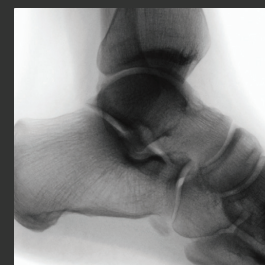
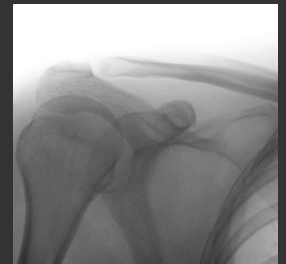
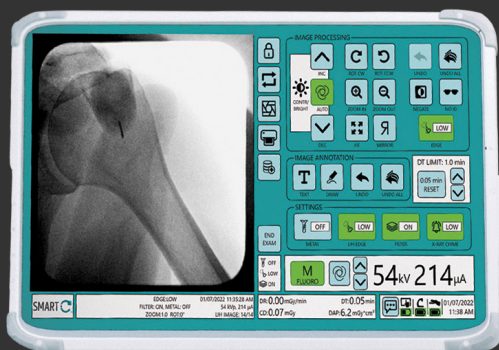


DICOM 3.0
Compliant



Up to 8 Hours
Cordless Runtime

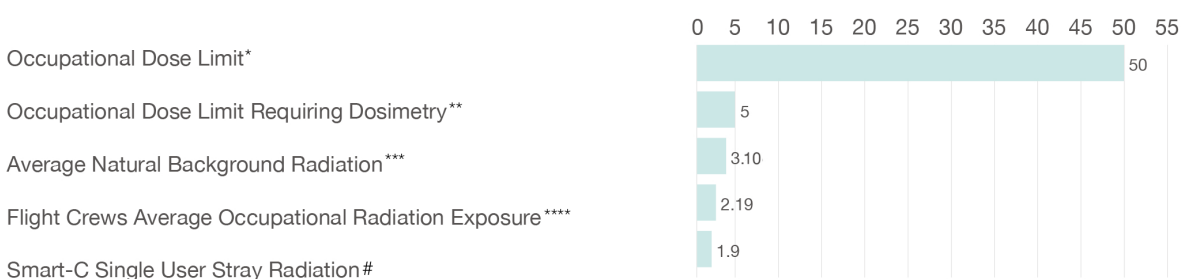
High-Definition Imaging Integrated Wireless Tablet





SMART-C® Provider and Patient Dose Comparisons

Smart-C Provider Annual Effective Dose (mSv)



* 10 CFR § 20.1201 — Occupational dose limits for adults.

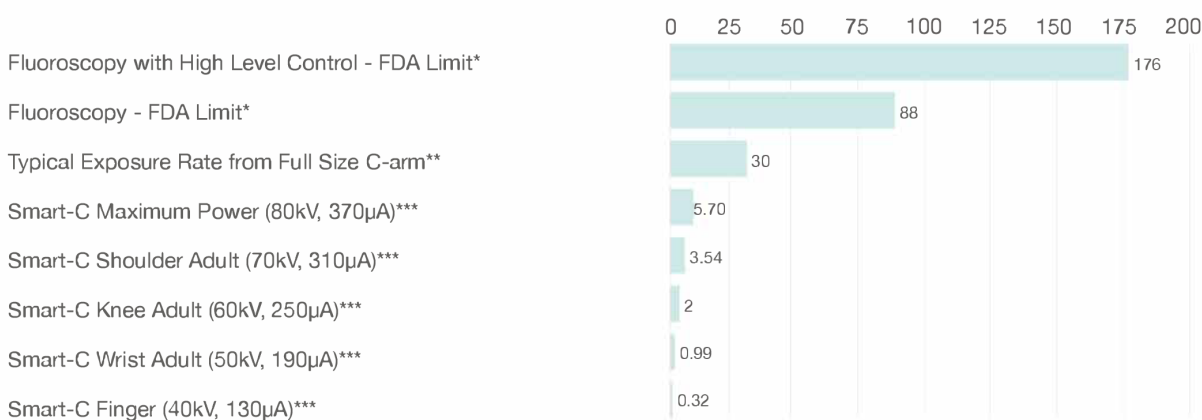
** 10 CFR § 20.1502 Conditions requiring individual monitoring of external and internal occupational dose.

*** NRC.gov "Biological Effects of Radiation"

**** Lestaevél, P., Huet, C., Lejeune, V., Moreno, C., Villagrasa, C., Feuardent, J., & Trompier, F. (2023). Cosmic radiation exposure of airline crews in France over the period 2015–2019. *Radioprotection*, 58(4), 317–325. <https://doi.org/10.1051/radiopro/2023027>

Worst Case (80 kV, 370 μ A) @ 0.125 mGy/hr, In Zone of Occupancy @ 40cm above detector 3 minutes of fluoroscopy per day for 300 days per year.

C-arm Air Kerma Rates @ Patient Entrance (mGy/min)



* Code of Federal Regulations (21 CFR 1020.32) Fluoroscopic Equipment

** Typical Patient Radiation Doses in Diagnostic Radiology, AAPM/RSNA Physics Tutorial for Residents, pp1296

*** Possible kV value for adult anatomy